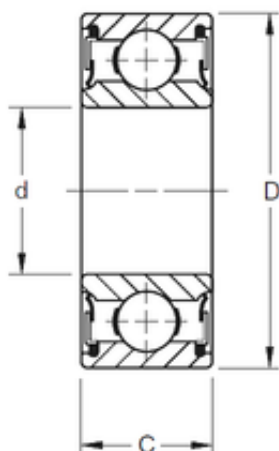




TIMKEN BEARING-SINGAPORE (PTE)LTD.



50 mm x 90 mm x 20 mm TIMKEN 210PP Single Row Ball Bearings

Bearing No. 210PP

Size	50x90x20 mm
Bore Diameter	50 mm
Outer Diameter	90 mm
Width	20 mm
d	50 mm
D	90 mm
B	20 mm
C	20 mm
Weight	0,476 Kg
Basic dynamic load rating (C)	40 kN

210PP Bearing 2D drawings and 3D CAD models